

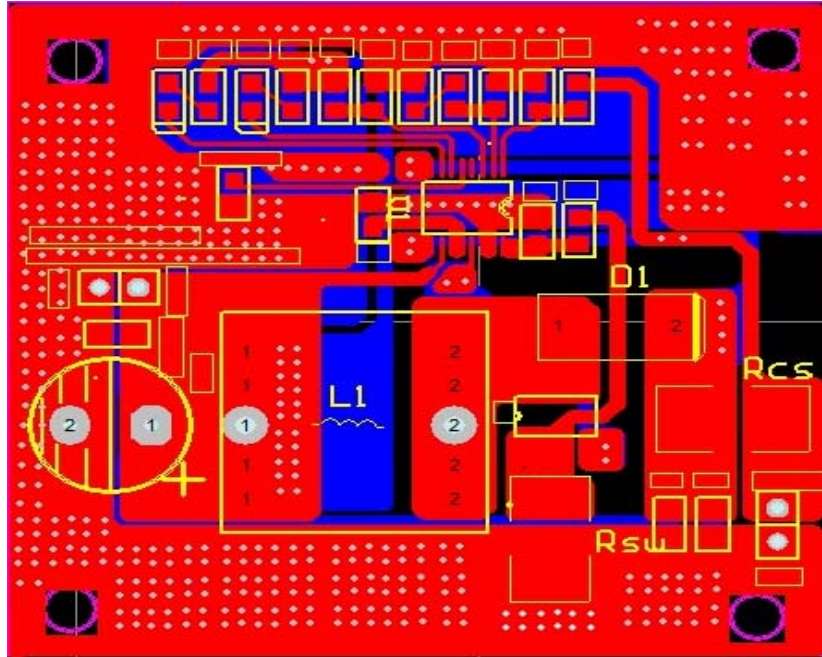
# CONSONANCE

## Quick Start of CN3306 Demo Board

### 1、 Overview

CN3306 demo board is for the purpose of fast evaluation of CN3306.

### 2、 PCB Layout of CN3306 Demo Board



### 3、 Component List and Descriptions

No.	Name	Description
1	VIN+	Positive Terminal of Input Power Supply.
2	GND	Negative Terminal of Input Power Supply.
3	VOOUT+	Positive Terminal of Battery.
4	U1	Step up Charger IC CN3306
5	R1	Constant Charging Voltage Setting Resistor.
6	R2	Constant Charging Voltage Setting Resistor.
7	R3	The Closed Loop Compensation resistor.
8	R4	SW Pin Filtering Resistor.
9	R5	MPP Voltage Setting Resistor.
10	R6	MPP Voltage Setting Resistor.
11	R7	LED Current Limit Resistor.
12	R8	LED Current Limit Resistor.
13	EN/ON	The Shutdown Input.
14	Rcs	Charge Current Sensing Resistor.
15	Rsw	The Inductor Current Sense Resistor.
16	L1	Inductor.

(Continued on the next page)

# CONSONANCE

(Continued from the last page)

No.	Name	Description
17	D1	The Rectifier Diode. Schottky diode is preferred for higher efficiency.
18	D2	LED for Charge Termination Indication.
19	D3	LED for Charging Indication.
20	M1	The External N-Channel MOSFET.
21	Cin, Cin_1	Input Bypassing Capacitor. Electrolytic capacitor and ceramic capacitor can be used.
22	Co1, Co2	Output Bypassing Capacitor.
23	C1	The Closed Loop Compensation Capacitor.
24	C2	The Closed Loop Compensation Capacitor.
25	C3	VCC Bypassing Capacitor.
26	C4	SW Pin Filtering Capacitor.